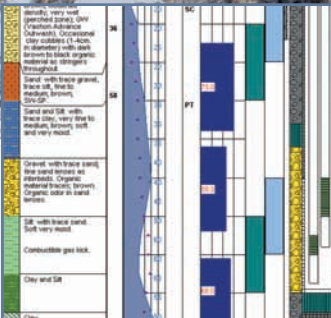


# Not Just Software . . . RockWare. For Over 29 Years.

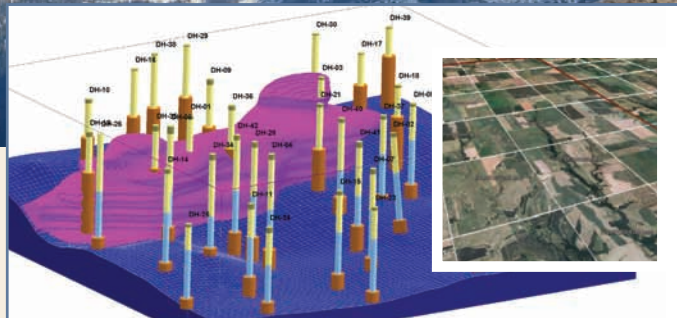


## LogPlot®

### Powerful, Flexible, Easy-to-Use Borehole Well Log Software

- Dozens of templates available or design your own in the drawing-style log designer window
- Tabbed data sheets
- Import/Export data from LAS, Excel, RockWorks
- Paginated and continuous logs at any vertical scale
- Export to a variety of formats
- Free viewer can be distributed to clients

**\$699**



## RockWorks®

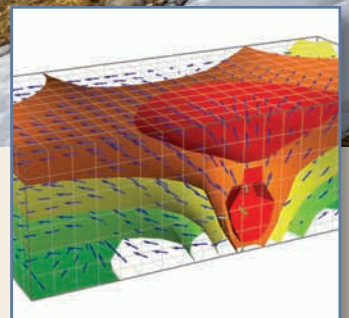
### Underground Data Management, Analysis and Visualization

- Powerful borehole-based data manager includes:
  - Geotechnical Data (e.g. compaction)
  - Oriented Fractures
  - Lithology (soil & rock)
  - Stratigraphy (e.g. weathering horizons)
  - Hydrology
  - Soil Chemistry
  - Downhole Geophysics
- Create boring logs, cross-sections, fence diagrams and 3D models
- Contour data in 2D and 3D (isosurfaces)
- Advanced material volumetrics
- AutoCAD (DXF) and ESRI (Shape) import/export capabilities

### An Indispensible Collection of Modeling, Analysis, and Display Tools

- Point and multivariate mapping tools
- Contour maps and 3D surfaces
- Section and Lease maps (land grid data included)
- Google Earth™ exports
- Gridding and block modeling tools
- Volumetrics
- Pit optimization
- Piper and Stiff diagrams
- Rose & Stereonet diagrams
- Statistical tools including histograms, scatter plots and ternary diagrams

**\$3,000**



## PetraSim™

### A Preprocessor and Postprocessor for TOUGH2, T2VOC, TMVOC, TOUGHREACT and TOUGHFX/HYDRATE

- Model multi-component fluid flow, heat transfer and reactive transport processes
- Saturated and unsaturated conditions
- Fractured and porous media
- Mesh generation, parameter definition, and display of results
- Now supports TOUGH2-MP (parallel version of the TOUGH2 simulator)
- Applications include geothermal studies, carbon sequestration, contaminant transport modeling, vadose zone hydrology and more

**Call for pricing**

Free trials for most of our products available at [www.rockware.com](http://www.rockware.com)

Follow us on:



Since 1983

European Sales

++41 91 967 52 53 • F: ++41 91 967 55 50  
[europe@rockware.com](mailto:europe@rockware.com)

US Sales

303.278.3534 • F: 303.278.4099  
[sales@rockware.com](mailto:sales@rockware.com)



**Production Editor: Helen Floyd-Walker**  
(helen.floyd-walker@geolsoc.org.uk)  
Geological Society, Publishing House, Unit 7, Brassmill  
Enterprise Centre, Brassmill Lane,  
Bath BA1 3JN, UK. Books for review should  
also be sent to this address.

**Submissions:** <http://qjgeh.allentrack.net>

**Instructions for authors:**  
<http://www.geolsoc.org.uk/qjgeh>

Scientific Editor: **E.N. Bromhead**, Kingston  
University, UK

Assistant Scientific Editor (engineering geology):  
**T. Dijkstra**, British Geological Survey, UK

Assistant Scientific Editor (geomaterials):  
**N. Koor**, University of Portsmouth, UK

Assistant Scientific Editor (hydrogeology):  
**D. Gooddy**, British Geological Survey, UK

## Editorial Board

**J.P. Bloomfield**  
British Geological Survey, UK

**S. Buss**  
ESI Ltd, UK

**A. Butler**  
Imperial College of Science,  
Technology & Medicine, UK

**A. N. Charalambous**  
Hydrolaw Limited, UK

**L. J. Donnelly**  
Wardell Armstrong International, UK

**D. Entwisle**  
British Geological Survey, UK

**J. S. Griffiths**  
University of Plymouth, UK

**I. Holman**  
Cranfield University, UK

**N. Howden**  
Cranfield University, UK

**I. Jefferson**  
University of Birmingham, UK

**B. Marker**  
Independent Consultant, UK

**S. Mathias**  
Durham University, UK

**R. Moore**  
Halcrow Group Limited, UK

**T. Muten**  
Tapajos Limited, UK

**D. Norbury**  
David Norbury Limited, UK

**M. O. Rivett**  
University of Birmingham, UK

**R.L. Terrington**  
British Geological Survey, UK

**D. Toll**  
Durham University, UK

**G. Tuckwell**  
RSK, UK

**R. Ward**  
British Geological Survey, UK

## Associate Editors

**R. Ahmad**  
University of The West Indies, Jamaica

**J. Buma**  
Deltares, The Netherlands

**J. Cassar**  
University of Malta, Malta

**D. F. Fenster**  
Bechtel Power Corporation, USA

**P. Flentje**  
University of Wollongong, Australia

**R. Guthrie**  
MDH Engineering Solutions, Canada

**A. Ireson**  
University of Saskatchewan, Canada

**B. Jackson**  
Victoria University of Wellington,  
New Zealand

**J. R. Keaton**  
AMEC Environment & Infrastructure,  
Inc., USA

**S.-G. Lee**  
The University of Seoul, Korea

**M. Long**  
University College Dublin, Ireland

**B. Misstear**  
Trinity College Dublin, Republic of  
Ireland

**R. Muzikar**  
Consultant, Czech Republic

**K. C. Ng**  
Geotechnical Engineering Office,  
Hong Kong

**P. Paige-Green**  
CSIR Built Environment, South Africa

**R. Stacey**  
University of Witwatersrand, South Africa

**A. K. Turner**  
Colorado School of Mines, USA

**J. Wasowski**  
National Research Council, Italy

**A. Williams**  
BECA Infrastructure Ltd, New Zealand

**The Quarterly Journal of Engineering Geology and Hydrogeology** is published by the Geological Society and is an established journal with subscriber numbers of over 4000 worldwide. Papers are invited from, and about, all areas of the world on engineering geology and hydrogeology topics including all relevant aspects of the approach of geology to civil engineering, mining practice and water resources. This includes but is not limited to: applied geophysics, engineering geomorphology, environmental geology, hydrogeology, groundwater quality, contaminated land, waste management, land use planning, geotechnics, rock mechanics, soil mechanics, geomaterials and geological hazards. The journal includes the prestigious Glossop and Ineson lectures, research papers, case histories, review articles, technical notes, photographic features, discussions, book reviews and periodic reports.

**The Geological Society** of London was founded in 1807, and is the oldest geological society in the world. It received

its Royal Charter in 1825 and is now Britain's national society for geology. Both a learned society and a professional body, the Geological Society is recognized by the Department of Trade and Industry (DTI) as the chartering authority for geoscience, able to award Chartered Geologist status upon appropriately qualified Fellows. Fellows of the Geological Society are entitled to a free subscription to the *Quarterly Journal of Engineering Geology and Hydrogeology*. Further information: email: [membership@geolsoc.org.uk](mailto:membership@geolsoc.org.uk); <http://www.geolsoc.org.uk>; tel: +44 (0) 207 434 9944. The Society is a Registered Charity, no. 210161.



1470-9236(201302)46:1;1-N

Typeset and printed in the United Kingdom by Henry Ling Limited, at the Dorset Press, Dorchester, DT1 1HD