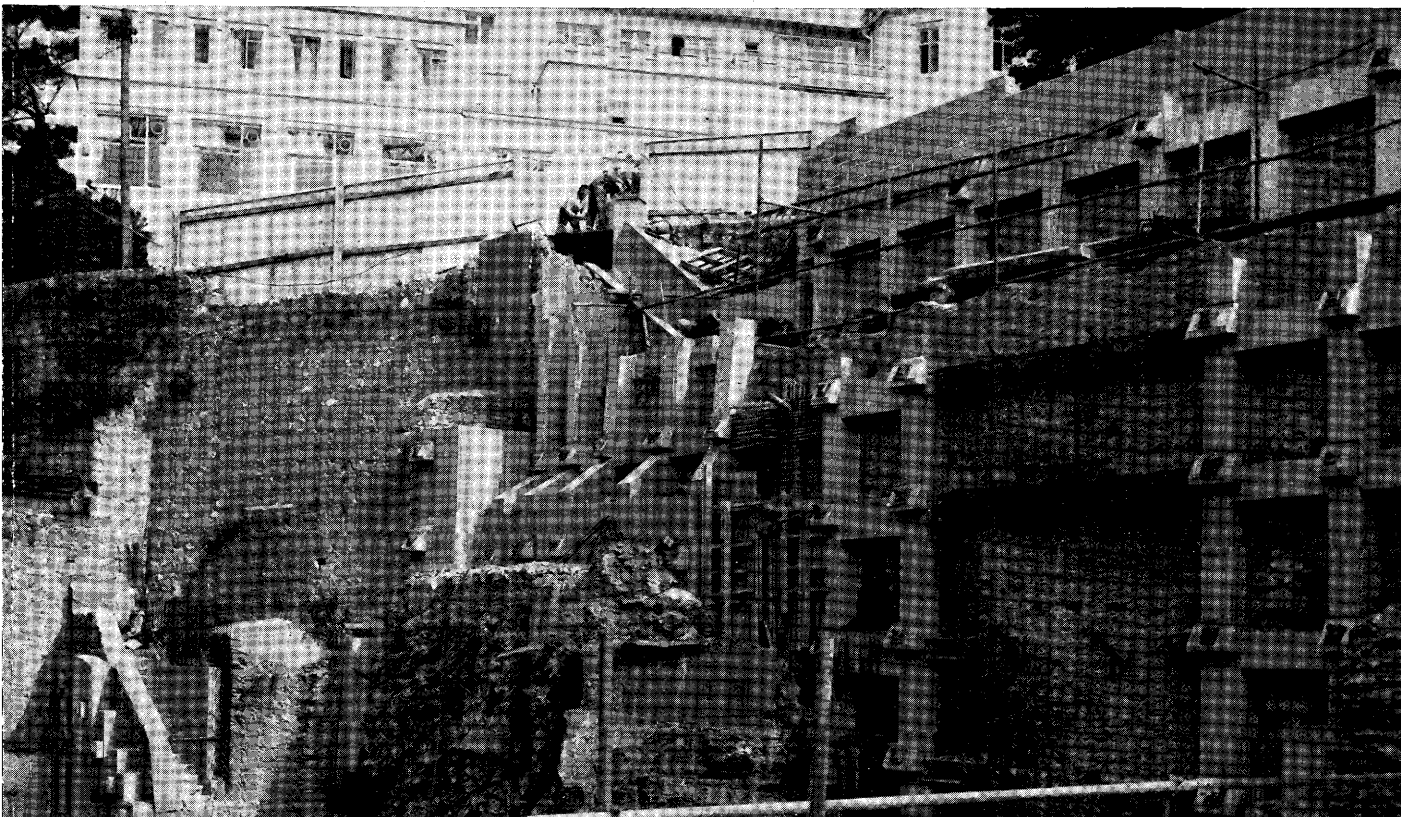


The Quarterly Journal of
**Engineering
Geology**

**Regional Meeting EXETER 13-16 September 1976
Methods of Investigation in Engineering Geology**

Volume 10 No 3 1977



GEOLOGICAL SOCIETY

President Professor W. S. Pitcher
Secretaries Professor M. G. Audley-Charles, Dr A. H. B. Stride
Foreign Secretary Dr J. V. Hepworth
Treasurer Dr D. G. Hobson

ENGINEERING JOURNAL EDITORIAL SUB-COMMITTEE

Chairman and Scientific Editor Professor W. R. Dearman, PH.D., A.R.C.S., F.G.S.
Dr E. T. Brown, Dr R. J. Chandler, Mr C. R. Cratchley,
Mr D. Eastaff, Dr P. G. Fookes, Dr A. B. Hawkins,
Mr P. Lancaster-Jones, Dr J. D. Mather, Dr A. H. B. Stride,
Dr R. K. Taylor.

THE QUARTERLY JOURNAL OF ENGINEERING GEOLOGY

The scope of the journal, within the field of engineering geology, is widely drawn. The journal is open to contributions from Fellows and non-Fellows of the Society, in this country and overseas. Papers will be considered which deal with any of the subjects within the field of geology as applied to civil engineering and mining practice, including rock mechanics, soil mechanics and geotechnics; applied sedimentology, pedology, mineralogy and petrology; geohydrology and hydrogeology; and engineering application of geophysics.

Case histories and review articles of a more general character will also be considered, particularly if these are of a timely nature. It will be editorial policy occasionally to group several related papers together in the same issue.

Scientific Editor

Professor W. R. Dearman, PH.D., A.R.C.S., F.G.S.
Department of Geology
Drummond Building
University of Newcastle-upon-Tyne
Newcastle-upon-Tyne, NE1 7RU
Telephone: 0632-28511

Assistant Scientific Editors

Dr R. K. TAYLOR
Engineering Geology Laboratories
Science Laboratories
South Road, Durham City
Telephone: 91-64971

Dr R. J. Chandler
Department of Civil Engineering
Imperial College
London SW7
Telephone: 01-589-5111

© The Geological Society, London 1977

Cover Illustration

SHOPPING DEVELOPMENT SITE, TORQUAY, DEVON, ENGLAND

This complex face defines the rear boundary of a major shop development site. It comprises thinly bedded limestone and some interbedded mudstone, above which variable fill materials are present and supported by ageing walls of dubious design and retaining capability. The end wall structure of the former Church on the site provided extensive buttressing and support to these walls and parts of the limestone face. The demolition of the Church, from high level to low level, required the replacement of the former support, installed progressively as demolition proceeded. This was achieved by casting *in situ* a reinforced concrete grillage tied back by the extensive use of rock anchors, the maximum working anchor loadings being 340 kN. *Client:* Mothercare Ltd. *Consultants:* Frederick Sherrell, Consulting Engineering Geologists. Peter Hill & Partners, Consulting Engineers. Newman, Levinson & Partners, Architects. *Contractors:* Bovis Civil Engineering Ltd.

THE QUARTERLY JOURNAL OF ENGINEERING GEOLOGY

Vol. 10, no. 3

1977

Price £5

Annual subscription: £18 (\$48.00 U.S.A.); single numbers all issues £5 (\$13.00 U.S.A.);
double numbers £10 (\$26.00 U.S.A.).

Contents

INTRODUCTORY STATEMENT	175
C. C. HIRD & J. D. HUMPHREYS: An experimental scheme for the disposal of micaceous residues from the china clay industry	177
D. J. COATES, P. G. CARTER & I. M. SMITH: Inclined drilling for the Kielder tunnels	195
P. C. HORNER & F. W. SHERRELL: The application of air-flush rotary percussion drilling techniques in site investigation	207
R. PEARSON & M. S. MONEY: Improvements in the Lugeon or packer permeability test	221
P. GRAINGER & D. M. MCCANN: Interborehole acoustic measurements in site investigation	241
W. R. DEARMAN, F. J. BAYNES & R. PEARSON: Geophysical detection of disused mineshafts in the Newcastle upon Tyne area, N.E. England	257
A. L. LITTLE: Investigating old dams	271
J. M. EDMOND & J. D. GRAHAM: Peterhead Power Station cooling water intake tunnel: An engineering case study	281
D. J. KNIGHT: Morecambe Bay feasibility study—subsurface investigations	303
D. J. CARTER & M. B. HART: Micropalaeontological investigations for the site of the Thames Barrier, London	321
SUMMARIES OF OTHER PAPERS READ AT THE MEETING	339
NEWS ITEM	353

Published for

THE GEOLOGICAL SOCIETY
BURLINGTON HOUSE,
PICCADILLY, LONDON W1V 0JU

by

SCOTTISH ACADEMIC PRESS LTD
33 MONTGOMERY STREET,
EDINBURGH EH7 5JX

and printed by

WESTERN PRINTING SERVICES LTD
CHITTENING ESTATE, AVONMOUTH, BRISTOL, BS11 0YG

and bound at

W. H. WARE & SONS LTD
CLEVEDON, BRISTOL