

# THE GEOLOGICAL SOCIETY

*President*  
*Secretaries*  
*Foreign Secretary*  
*Treasurer*

Professor B E Leake  
Dr A J Martin, Dr J Brooks, Dr L R M Cocks  
Professor J B Dawson  
Dr W J French

## ENGINEERING JOURNAL EDITORIAL BOARD

*Chairman and Scientific Editor:* Mr A L Little, The Geological Society, Burlington House, Piccadilly, London W1V 0JU (Telephone: 01-434 9944).

*Sub Editor (Engineering Geology):* Dr M H de Freitas, Imperial College, London SW7 (Telephone: 01-589 5111).

*Sub Editor (Hydrogeology):* Mr K M Baxter, Water Research Centre, P.O. Box 16, Marlow, Bucks. (Telephone: 0491-57531).

Professor J H Atkinson, Dr R D Barker, Dr F G Bell, Mr J H Black, Dr L Clark, Mr K R Early, Professor P G Fookes, Dr A B Hawkins, Mr K H Head, Dr R Herbert, Mr J W Hooper, Dr J A Hudson, Dr R J W McDermott, Mr R W Simpson, Dr B O Skipp, Dr R K Taylor, Mr M J Tomlinson, Mr G Walton

*Engineering Group Chairman:* Dr R K Taylor, *Engineering Group Secretary:* Mrs S M Herbert, *Hydrogeology Group Secretary:* Dr P A Towler

## FELLOWSHIP OF THE GEOLOGICAL SOCIETY MEMBERSHIP OF THE ENGINEERING AND HYDROGEOLOGICAL GROUPS

Membership is open to all Fellows of the Society. There are no rigid requirements for election to Fellowship, although it is usually expected that candidates will be graduates in geology or an allied subject, or have equivalent qualifications or experience. The specialist groups are open to all Fellows without additional charge. Enquiries concerning Fellowship of the Society and membership of the specialist groups should be sent to the Secretary, Geological Society, Burlington House, Piccadilly, London W1V 0JU. All Fellows of the Society are entitled to receive for their subscription either of the Society's two journals, the Quarterly Journal of Engineering Geology or the Journal of the Geological Society. On payment of an additional sum of £14.00 on the annual subscription, members may obtain copies of both journals.

## THE QUARTERLY JOURNAL OF ENGINEERING GEOLOGY

The scope of the journal, within the fields of hydrogeology and engineering geology, is widely drawn. The journal is open to contributions from Fellows and non-Fellows of the Society, in this country and overseas. Papers will be considered which deal with any of the subjects within the field of geology as applied to civil engineering, mining practice, and water resources, including rock mechanics, soil mechanics and geotechnics; applied sedimentology, pedology, mineralogy and petrology; geohydrology and hydrogeology; engineering seismology and the engineering application of geophysics.

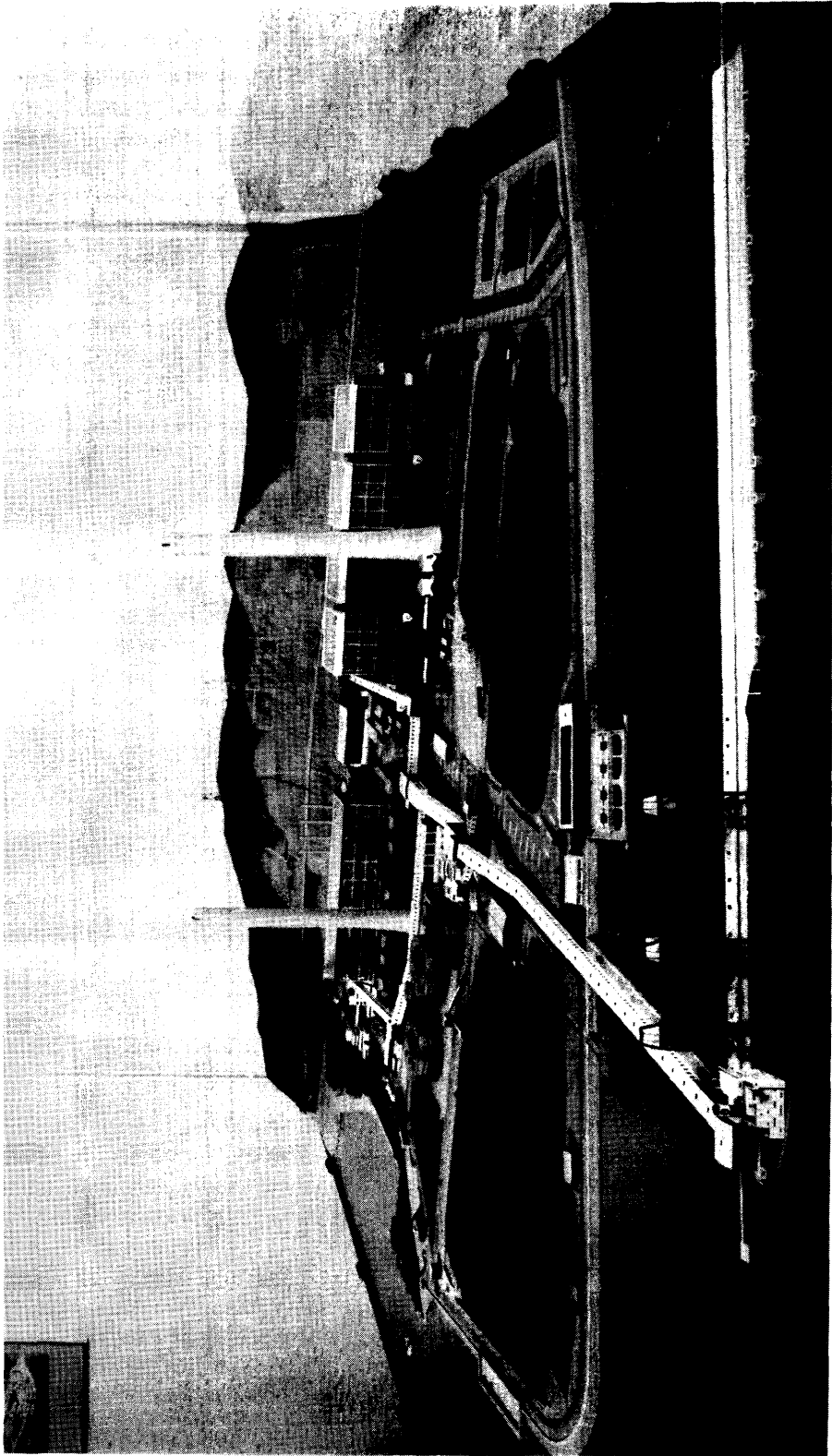
Case histories and review articles of a more general character will also be considered, particularly if these are of a timely nature. It will be editorial policy occasionally to group several related papers together in the same issue.

© The Geological Society 1987

Authorization to photocopy for internal or personal use or the internal or personal use of specific clients is granted by the Geological Society for libraries and other users registered with the Copyright Clearance Center (CCC) Transactional Reporting Service, provided that the base fee of \$02.00 per copy is paid directly to the CCC, 27 Congress Street, Salem, MA 01970, U.S.A. This consent does not extend to other kinds of copying, such as copying for general distribution, for advertising or promotional purposes, for creating new collective works or for resale. Special requests should be addressed to the Editor. 0481-2085/86 \$02.00.

*1987 subscription:* £78.50 (UK), £94.00 (Overseas), U.S.\$153.00 (North America and Japan); single numbers all issues £23.50 (\$38.25 U.S.A.); double numbers £47.00 (\$76.50 U.S.A.). Outside Europe, the journal is despatched by various forms of airspeeded delivery. Second class postage paid at New York, NY. Postmaster, send address corrections to *The Quarterly Journal of Engineering Geology*, c/o Expeditors of the Printed Word Ltd, 515 Madison Avenue, New York, NY 10022. Current issues for the Indian subcontinent, Australasia and the Far East are sent by air to regional distribution points from where they are forwarded to subscribers by surface mail. Any back numbers are normally despatched by surface to all regions, except North America, where they are sent by a.s.p., and India, where they are sent by air freight.

*Cover illustration:* The remains of a mine abandoned about 1800 in the Lower Wenlock Limestone at Wren's Nest Hill, Dudley, West Midlands. This part of the mine dips at 35°, and was originally worked to create tunnels along the strike; the photograph shows the uppermost of four such tunnels. Subsequently, the walls between the tunnels were partially removed, so that only pillars remain to support the roof. The scaffolding uprights are the remains of a barrier erected in the late 1970s when the public were admitted to view the mine, but roof falls made this dangerous and the whole mine is now surrounded by a stout fence. Photograph by Ove Arup & Partners. Clients: Dudley Metropolitan Borough Council and the Department of the Environment.



---

Photographic Feature: Castle Peak Power Station, Hong Kong . . . . .	262
R. I. ACWORTH: The development of crystalline basement aquifers in a tropical environment. . . . .	265
R. F. STONER & W. BAKIEWICZ: Groundwater abstraction—construction, operation and maintenance: an international overview. . . . .	273
M. J. D. DOBIE: Slope instability in a profile of weathered norite . . . . .	279
J. O. ARUMALA & E. G. AKPOKODJE: Soil properties and pavement performance in the Niger Delta . . . . .	287
J.-P. LATHAM & A. B. POOLE: The application of shape descriptor analysis to the study of aggregate wear. . . . .	297
J.-P. LATHAM & A. B. POOLE: Technical note: Pilot study of an aggregate abrasion test for breakwater armourstone . . . . .	311
Book reviews . . . . .	317
Notices received . . . . .	319

---

Indexed in *Current Contents*, *ASCA*, *Science Citation Index*

*Published for*

**THE GEOLOGICAL SOCIETY**

BURLINGTON HOUSE,

PICCADILLY, LONDON W1V 0JU

*by*

**BLACKWELL SCIENTIFIC PUBLICATIONS LTD**

OSNEY MEAD

OXFORD, OX2 0EL

*and printed by*

**THE UNIVERSITIES PRESS (BELFAST) LTD**

ALANBROOKE ROAD, BELFAST BT6 9HF, NORTHERN IRELAND