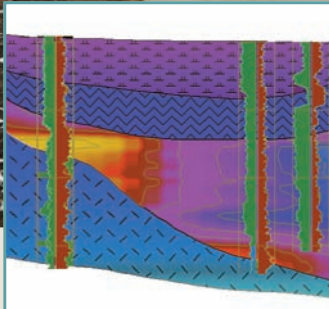


Not Just Software . . . RockWare. For Over 29 Years.

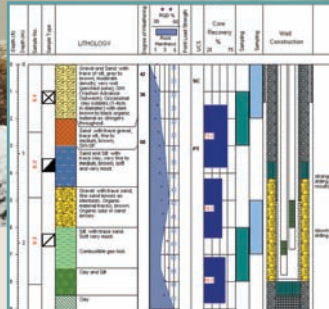


RockWorks®

Underground Data Management, Analysis & Visualization

- Powerful borehole-based data manager includes:
 - Geotechnical Data (e.g. compaction)
 - Oriented Fractures
 - Lithology (soil & rock)
 - Stratigraphy (e.g. weathering horizons)
 - Hydrology
 - Soil Chemistry
 - Downhole Geophysics
- Create boring logs, cross-sections, fence diagrams and 3D models
- Contour data in 2D and 3D (isosurfaces)
- Advanced material volumetrics
- AutoCAD (DXF) and ESRI (Shape) import/export capabilities
- Includes RockWorks Utilities

\$3,000

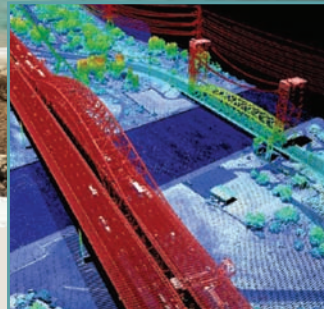


LogPlot®

Powerful, Flexible, Easy-to-Use Borehole and Well Log Software

- Dozens of templates available or design your own in the drawing-style log designer window
- Tabbed data sheets
- Import/Export data from LAS, Excel, RockWorks
- Paginated and continuous logs at any vertical scale
- Export to a variety of formats
- Free viewer can be distributed to clients

\$699

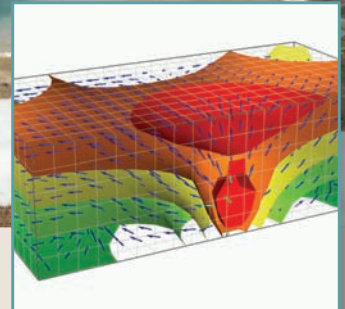


MARS®

Data Processing for Airborne, Terrestrial and Mobile LiDAR Datasets

- 64-bit support for all Windows operating systems
- Capable of loading LiDAR (LAS), imagery (RGB and hyperspectral) and GIS vectors
- Supports WMS imagery, including Bing Maps
- Batch generate DEMs and elevation contours
- Automated and manual LiDAR filtering tools
- Allows multi-core processing for more efficient use of PC hardware
- 3D coordinate transformation support for LAS files (horizontal and vertical!)
- New flood inundation modeling capabilities

\$4,995



PetraSim™

A Preprocessor and Postprocessor for TOUGH2, T2VOC, TMVOC, TOUGHREACT and TOUGH-FX/HYDRATE

- Model multi-component fluid flow, heat transfer and reactive transport processes
- Saturated and unsaturated conditions
- Fractured and porous media
- Mesh generation, parameter definition, and display of results
- Now supports TOUGH2-MP (parallel version of the TOUGH2 simulator)
- Applications include geothermal studies, carbon sequestration, contaminant transport modeling, vadose zone hydrology and more

Call for pricing

Free trials for most of our products available at www.rockware.com

Follow us on:



European Sales
++41 91 967 52 53 • F: ++41 91 967 55 50
europa@rockware.com

US Sales
303.278.3534 • F: 303.278.4099
sales@rockware.com



Production Editor: Helen Floyd-Walker,
(e-mail: helen.floyd-walker@geolsoc.org.uk)
Geological Society, Publishing House, Unit 7,
Brassmill Enterprise Centre, Brassmill Lane,
Bath BA1 3JN, UK. Books for review should
also be sent to this address.

Submissions: <http://qjgeh.allentrack.net>

Instructions for authors:
<http://www.geolsoc.org.uk/qjgeh>

Scientific Editor: **M. G. Winter**, Transport Research
Laboratory (TRL), UK

Assistant Scientific Editor (engineering geology):
M. G. Culshaw, University of Birmingham and British
Geological Survey, UK

Assistant Scientific Editor (geomaterials):
T. Dijkstra, Loughborough University, UK

Assistant Scientific Editor (hydrogeology):
D. Gooddy, British Geological Survey, UK

Editorial Board

J.P. Bloomfield
British Geological Survey, UK

E. Bromhead
Kingston University, UK

S. Buss
ESI Ltd, UK

A. Butler
Imperial College of Science,
Technology & Medicine, UK

A. N. Charalambous
Hydrolaw Limited, UK

L. J. Donnelly
Wardell Armstrong LLP, UK

D. Entwisle
British Geological Survey, UK

J. S. Griffiths
University of Plymouth, UK

I. Holman
Cranfield University, UK

N. Howden
Cranfield University, UK

I. Jefferson
University of Birmingham, UK

N. Koor
University of Portsmouth, UK

B. Marker
Independent Consultant, UK

S. Mathias
Durham University, UK

R. Moore
Halcrow Group Limited, UK

T. Muten
Tapajos Limited, UK

D. Norbury
David Norbury Limited, UK

M. O. Rivett
University of Birmingham, UK

J. W. N. Smith
Shell Global Solutions, UK

D. Toll
Durham University, UK

G. Tuckwell
RSK, UK

N. Walton
University of Portsmouth, UK

R. Ward
British Geological Survey, UK

Associate Editors

R. Ahmad
University of The West Indies, Jamaica

J. Buma
Deltares, The Netherlands

J. Cassar
University of Malta, Malta

D. F. Fenster
Bechtel Power Corporation, USA

P. Flentje
University of Wollongong, Australia

R. Guthrie
HEMMERA, Canada

A. Ireson
University of Saskatchewan, Canada

B. Jackson
Victoria University of Wellington,
New Zealand

A. Jiménez-Madrid
CRN Consultores, Spain

J. R. Keaton
AMEC Environment & Infrastructure,
Inc., USA

S.-G. Lee
The University of Seoul, Korea

M. Long
University College Dublin, Ireland

B. Misstear
Trinity College Dublin, Republic of
Ireland

R. Muzikar
Consultant, Czech Republic

K. C. Ng
Geotechnical Engineering Office,
Hong Kong

P. Paige-Green
CSIR Built Environment, South Africa

R. Stacey
University of Witwatersrand, South Africa

A. K. Turner
Colorado School of Mines, USA

J. Wasowski
National Research Council, Italy

A. Williams
BECA Infrastructure Ltd, New Zealand

The Quarterly Journal of Engineering Geology and Hydrogeology is published by the Geological Society and is an established journal with subscriber numbers of over 4000 worldwide. Papers are invited from, and about, all areas of the world on engineering geology and hydrogeology topics including all relevant aspects of the approach of geology to civil engineering, mining practice and water resources. This includes but is not limited to: applied geophysics, engineering geomorphology, environmental geology, hydrogeology, groundwater quality, contaminated land, waste management, land use planning, geotechnics, rock mechanics, soil mechanics, geomaterials and geological hazards. The journal includes the prestigious Glossop and Ineson lectures, research papers, case histories, review articles, technical notes, photographic features, discussions, book reviews and periodic reports.

The Geological Society of London was founded in 1807, and is the oldest geological society in the world. It received

its Royal Charter in 1825 and is now Britain's national society for geology. Both a learned society and a professional body, the Geological Society is recognized by the Department of Trade and Industry (DTI) as the chartering authority for geoscience, able to award Chartered Geologist status upon appropriately qualified Fellows. Fellows of the Geological Society are entitled to a free subscription to the *Quarterly Journal of Engineering Geology and Hydrogeology*. Further information: email: membership@geolsoc.org.uk; <http://www.geolsoc.org.uk>; tel: +44 (0) 207 434 9944. The Society is a Registered Charity, no. 210161.



1470-9236(201202)45:1;1-R

Typeset and printed in the United Kingdom by Henry Ling Limited, at the Dorset Press, Dorchester, DT1 1HD